

Anthropocentric framings of Antimicrobial Resistance:

An analysis of One Health policy documents

Alena Kamenshchikova^{1,2}, Petra F.G. Wolffs¹, Christian J.P.A. Hoebe^{1,3}, Klasien Horstman¹

¹Maastricht University, the Netherlands; ²National Research Tomsk State University, Russia; ³South Limburg Public Health Service, Heerlen, the Netherlands

One Health

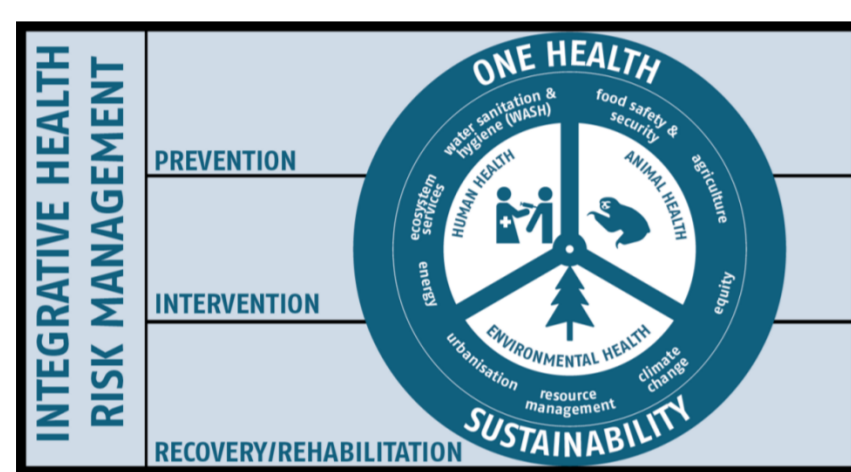
- A new paradigm in health policy documents
- Aims to build collaborations between human, animal and environmental health sectors
- Disagreements regarding the realization of cross-sectoral collaborations
- Disagreements about establishing the priorities between human health, animal health, environmental health, and economic considerations

Theory

- Constructivist policy analysis (Gusfield, 1984; Stone, 2012)
- Documents as material-semiotic objects (Asdal, 2008; Latour, 1988; Latour & Woolgar, 1986; Callon, 1986)
- Posthumanism – understanding human problems by taking non-humans into account (Badmington, 2004; Murdoch, 2001; Rock, 2013)

Document analysis

- Eleven EU and international documents dedicated to AMR and OH
- Twelve documents that focus on general health issues and inform AMR policies

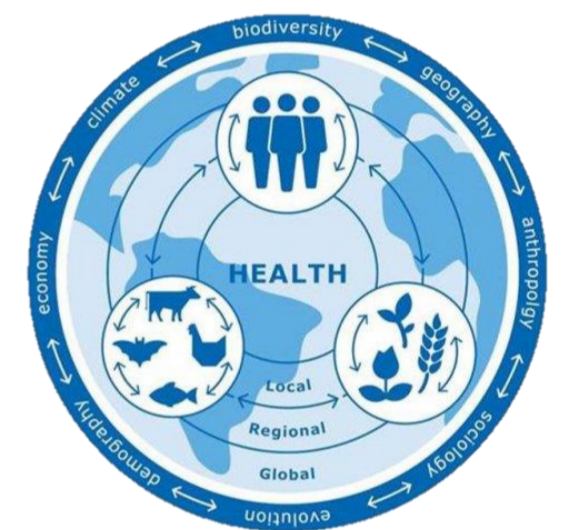


From <http://onehealth.grforum.org/about/about-one-health>



From http://www.oie.int/fileadmin/Home/eng/Media_Center/img/PortailOH/EN_Onehealth-terr.pdf

How is the notion of One Health conceptualized in policy documents and what kind of initiatives does it entail?



From <http://www.wur.nl/About-Wageningen/Strategic-Plan/Global-One-Health.htm>

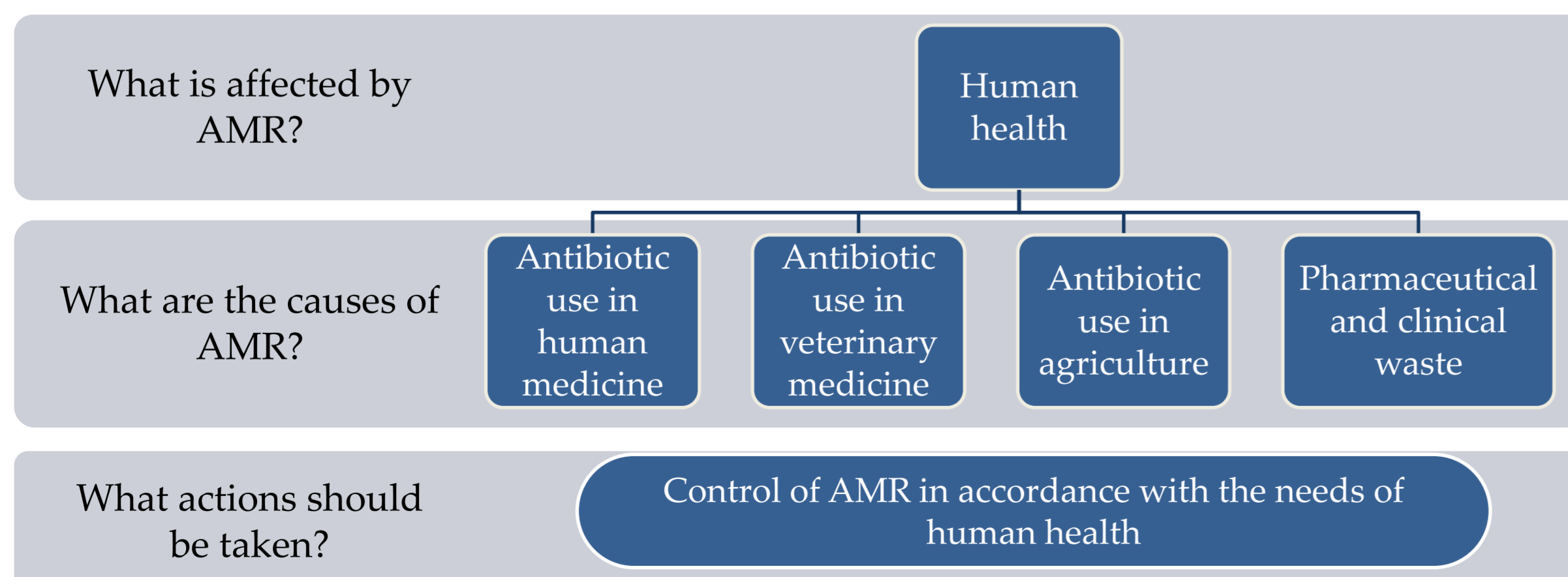


From <https://www.ncas-australia.org/one-health>

Results

- AMR OH policy documents follow the discourses present in general international health regulations
- Animal and environmental sectors are framed as a risk for human health

“[T]he overarching principle for addressing antimicrobial resistance is the promotion and protection of human health within the framework of a One Health approach...” (General Assembly of the United Nations, 2016)



Conclusion

- Anthropocentric framings of OH run the risk of shaping asymmetrical collaborations between diverse health sectors